

SPECIFICATION FOR APPROVAL

承 认 书

CUSTOMER
客户名称:

NUMBER
编 号: B-19010801

DESCRIPTION
品 名: 共模滤波器

QUANTITY
数 量:

PART NO.
型 号: BCCM1005-SERIES

DATE
日 期: 2018/1/8

CUSTOMER PART NO.
客户料号:

NOTE
注 解:

APPROVAL SIGNATURE 客户承认签章

APPROVED BY 核 准	Q. C. DEPT. 品 管	CHECKED BY 核 查	DRAWN BY 制 作

深圳市惠尔德电子有限公司

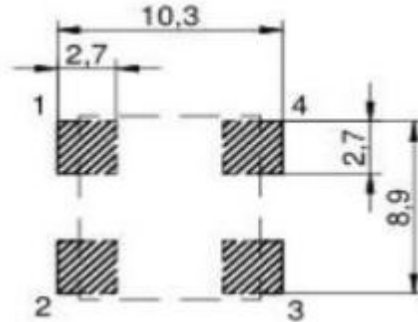
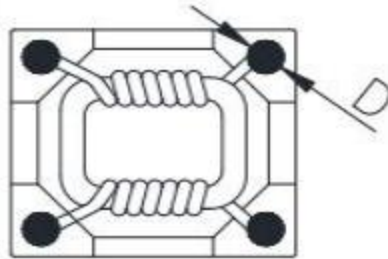
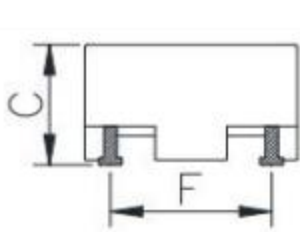
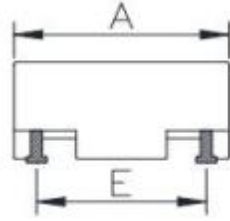
SHENZHEN HUIERDE ELECTRONICS CO., LTD.

地址: 深圳市龙华区观澜街道福民福苑工业区二栋三楼

Tel: 13510325766

客户名称 CUSTOMER		客户品名 CUSTOMER P/N		版别 REV.	A
产品类型 PRODUCT TYPE	COMMON MODE FILTER	品名 OURS P/N	BCCM1005-SERIES	文件编号 FILE NO.	B-19010801

一.外观图/DIMENSION (单位/UNIT :
mm)

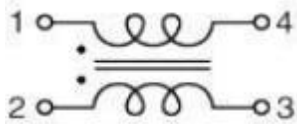


Land Pattern

A	9.5 ±0.3
B	8.3 ±0.3
C	5.3 Max
D	1.2 Typ
E	7.5 Typ
F	6.3 Typ

二. 电路图/CIRCUIT DIAGRAM

三 注意事项/NOTE :



- 1.印字 : 白色
- 2.平整度 : 0.12MM MAX

四. 电气特性/ELECTRICAL CHARACTERISTIC

Products No.	Common mode Impedance @100MHz (Ω)	Inductance (uH) @100KHz/0.1V	DCR (m Ω) Max.	Rated Current (A) Max	Insulation Test Voltage (AC)Max.	Marking
BCCM1005-2-501T	500 (Typ)	5 (Typ)	5.5	5.0	500V	501
BCCM1005-2-801T	800 (Typ)	9 (Typ)	11	3.5	500V	801
BCCM1005-2-102T	1000 (Typ)	11 (Typ)	30	2.5	500V	102
BCCM1005-2-222T	2200 (Typ)	30 (Typ)	60	1.4	500V	222

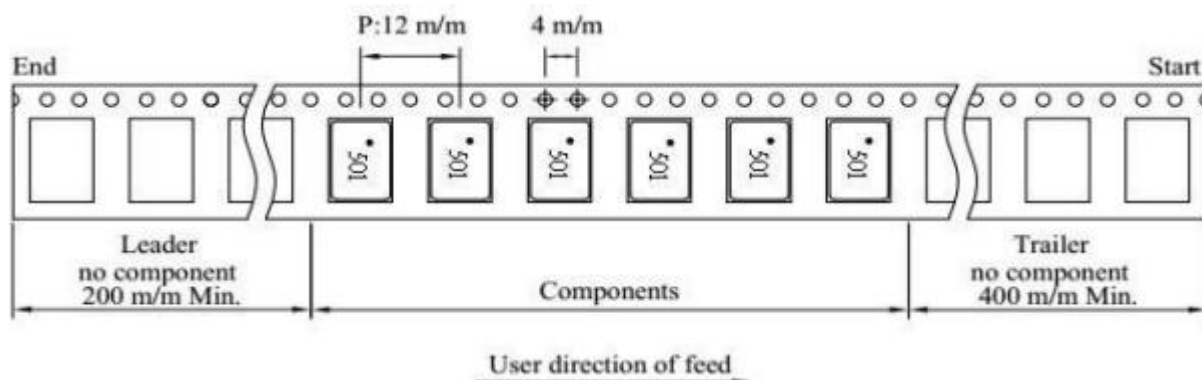
- (1).Rated Current: Temp.rise 40°C Typ (2).Operating Temperature: -40°C up to +125°C
(3).Storage Temperature: -20°C up to +40°C, 75% RH max.

客户名称 CUSTOMER		客户品名 CUSTOMER P/N		版别 REV.	A
产品类型 PRODUCT TYPE	COMMON MODE FILTER	品名 OURS P/N	BCCM1005-SERIES	文件编号 FILE NO.	B-19010801

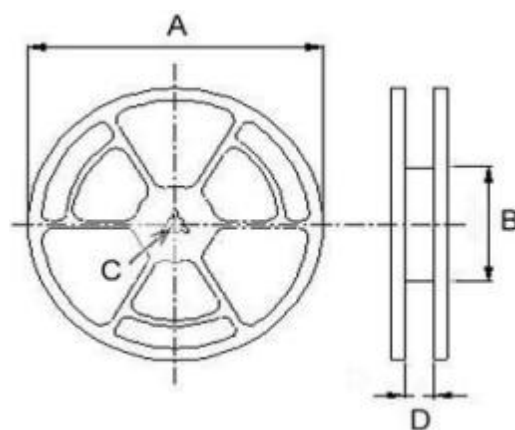
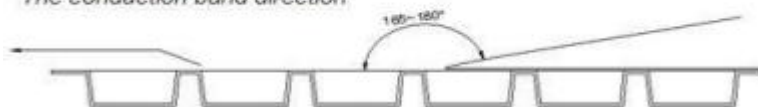
五.材料清单/MATERIAL LIST

NO.	ITEM	DESCRIPTION
1	CORE	FERRITE
2	CASE	DAP
3	WIRE	P180 Grd1
4	SOLDER	Sn99.3:Cu0.7
5	INK	WHITE

六.编带规格/TAPING SPECIFICATIONS



Adhesive strength of cover tape is 20 to 120 gf
The conduction band direction



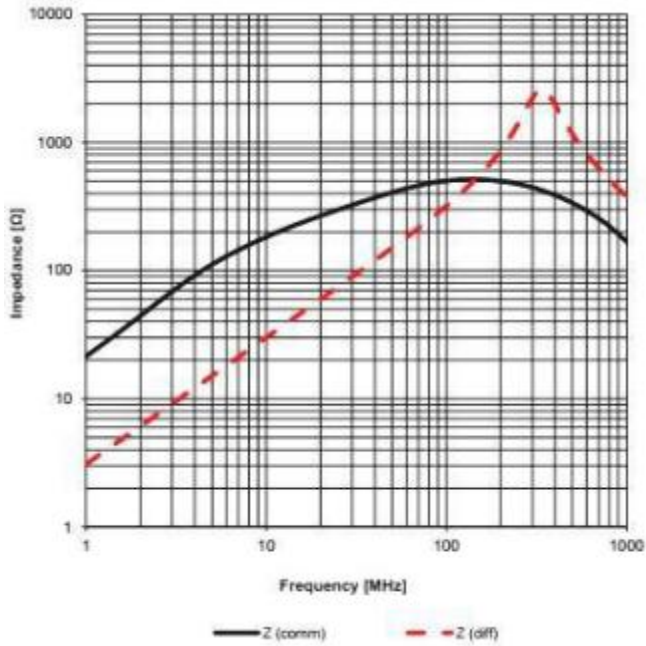
Reel Dimensions (Unit: mm)

Quantity

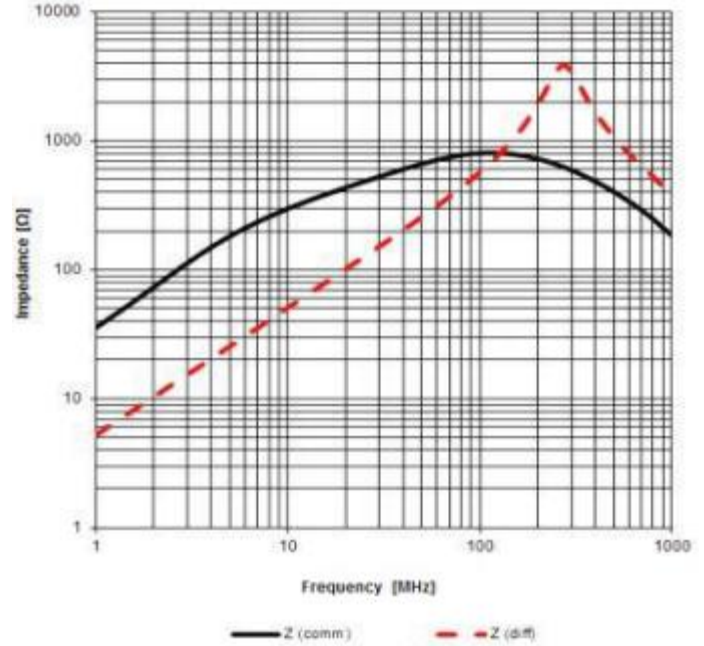
A	B	C	D	Pcs/Reel
330	100	13	16.5	1000

客户名称 CUSTOMER		客户品名 CUSTOMER P/N		版别 REV.	A
产品类型 PRODUCT TYPE	COMMON MODE	品名 OURS P/N	BCCM1005-SERIES	文件编号 FILE NO.	B-19010801

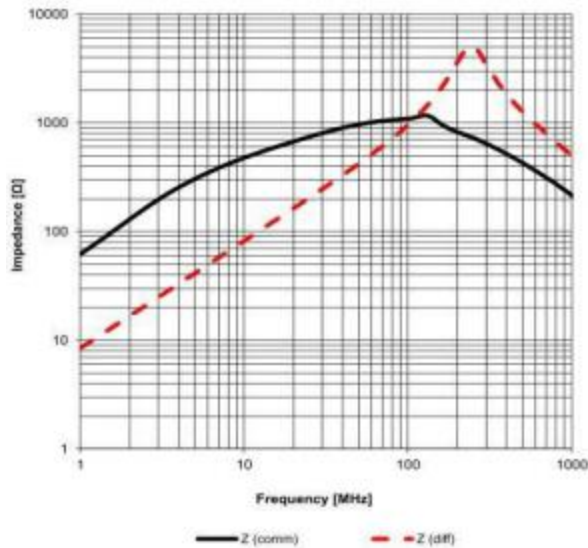
七.特征曲线/CHARACTERISTICS (REFERENCE)
BCCM1005-2-501T



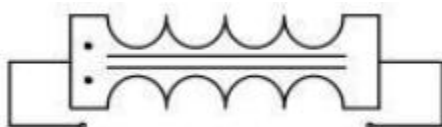
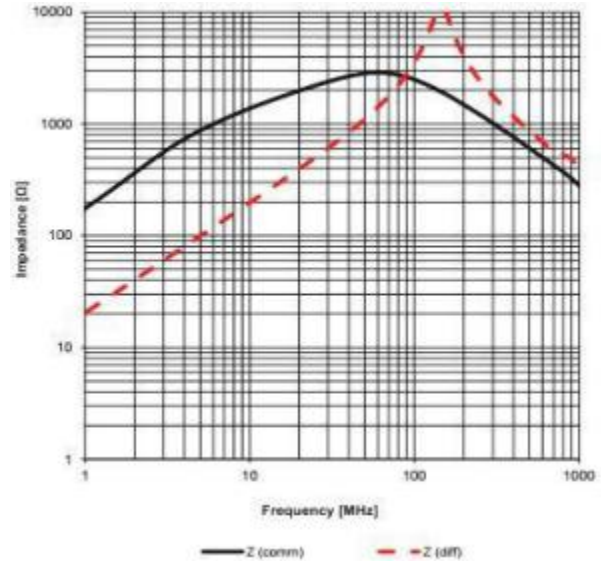
BCCM1005-2-801T



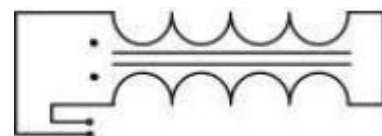
BCCM1005-2-102T



BCCM1005-2-222T



Common Mode



Differential Mode